

# Eastpointe Police Department



***10 Year Crime Trends  
2002 - 2011***



## Crime Trends - Table of Contents

Crime Statistics Table.....	Page 1
Total Calls Dispatched Graph.....	Page 2
Murder, CSC, and Robbery Graph.....	Page 3
B & E, Stolen Cars, and Vandalism Graph.....	Page 4
Arson and Fatal Accidents Graph.....	Page 5
Larceny Graph.....	Page 6
Operating under the Influence and Alarms Graph.....	Page 7
Total Accidents, and Injury Accidents Graph.....	Page 8
Violations Issued Graph.....	Page 9
Warrant Arrests and Warrants Obtained by DB Graph.....	Page 10
Assault, Threats/Intimidation/Stalking.....	Page 11
Total Arrests (Adults and Juveniles).....	Page 12

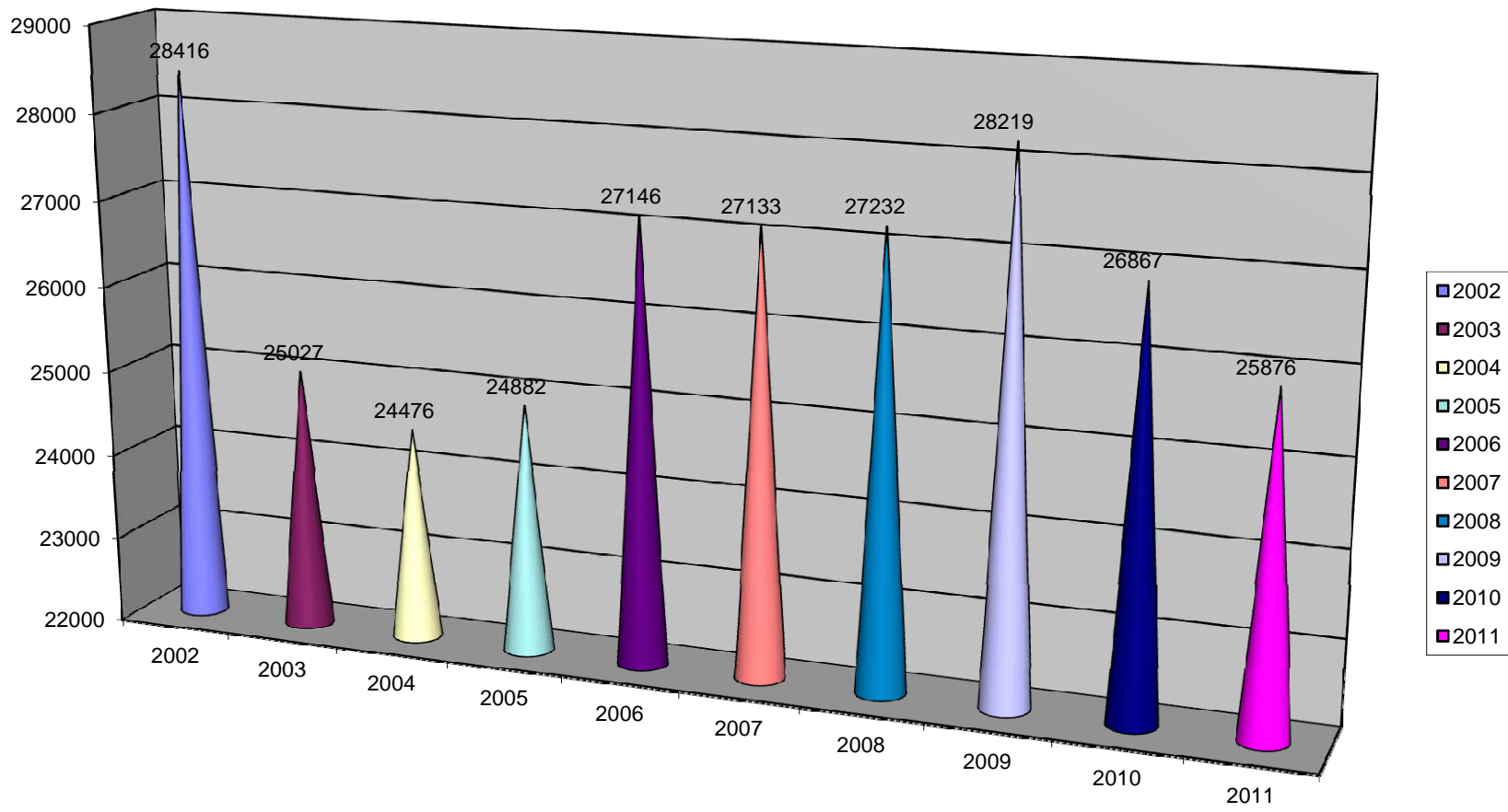


## EASTPOINTE POLICE DEPARTMENT 10 YEAR STATISTICAL ANALYSIS

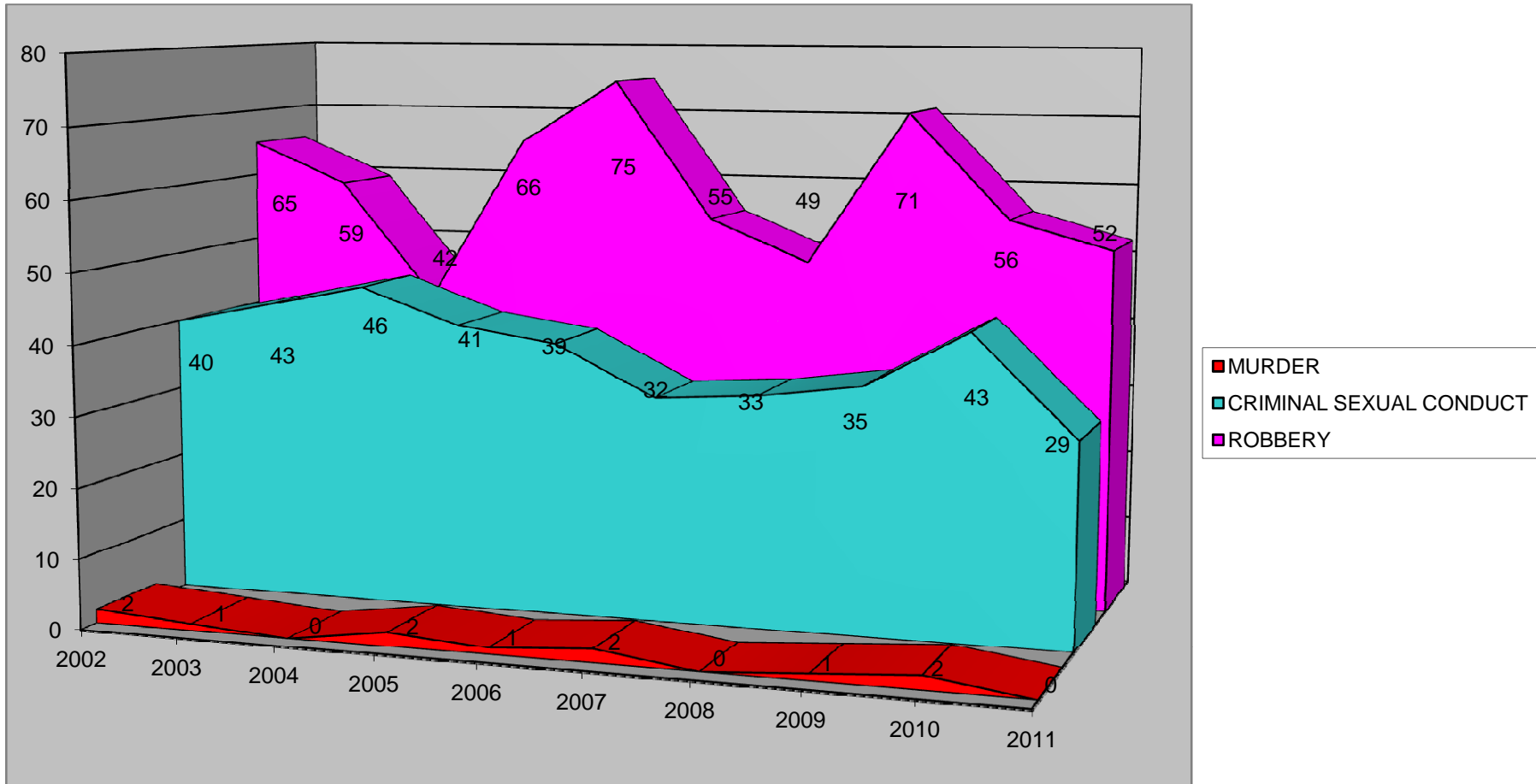
CRIME / STATISTIC	2002	2003	2004	2005	2006	2007	2008	2009	2010	2011
MURDER	2	1	0	2	1	2	0	1	2	0
CRIMINAL SEXUAL CONDUCT	40	43	46	41	39	32	33	35	43	29
ROBBERY	65	59	42	66	75	55	49	71	56	52
ASSAULT	373	230	215	266	260	310	399	400	552	571
THREATS/INTIM./STALKING	364	326	295	394	333	266	172	154	183	215
ARSON	7	7	6	17	9	22	14	12	10	7
BREAK & ENTERING	193	160	167	243	234	190	229	204	264	268
LARCENY	739	813	794	804	790	706	661	579	638	547
STOLEN VEHICLES	273	291	290	327	442	282	299	222	192	198
VANDALISM	340	369	337	383	453	425	482	365	371	290
WARRANT ARRESTS	1410	1435	1786	1872	1684	1415	1457	763	1019	991
ALARMS	1322	1179	1292	1129	1160	1186	1270	1168	1292	1276
VIOLATIONS	16338	13406	12845	14207	16391	18338	20612	20701	18836	16366
OPERATING UNDER INFLUENCE	91	88	111	92	136	127	170	130	122	205
ACCIDENTS (TOTAL)	1046	764	687	840	592	634	576	515	571	604
FATAL ACCIDENTS	2	0	0	3	0	0	0	0	1	1
INJURY ACCIDENTS	122	120	85	101	90	53	38	34	23	13
DB FELONY WARRANTS	587	686	923	945	942	727	903	1063	948	895
DB MISDEMEANOR WARRANTS	510	537	522	436	491	386	570	589	696	636
TOTAL ARRESTS (ADULT & JUVENILE)	N/A	N/A	N/A	N/A	N/A	N/A	2544	2827	2225	2276
TOTAL CALLS DISPATCHED	28416	25027	24476	24882	27146	27133	27232	28219	26867	25876

**Assault Category now includes All Assault SubCategories**

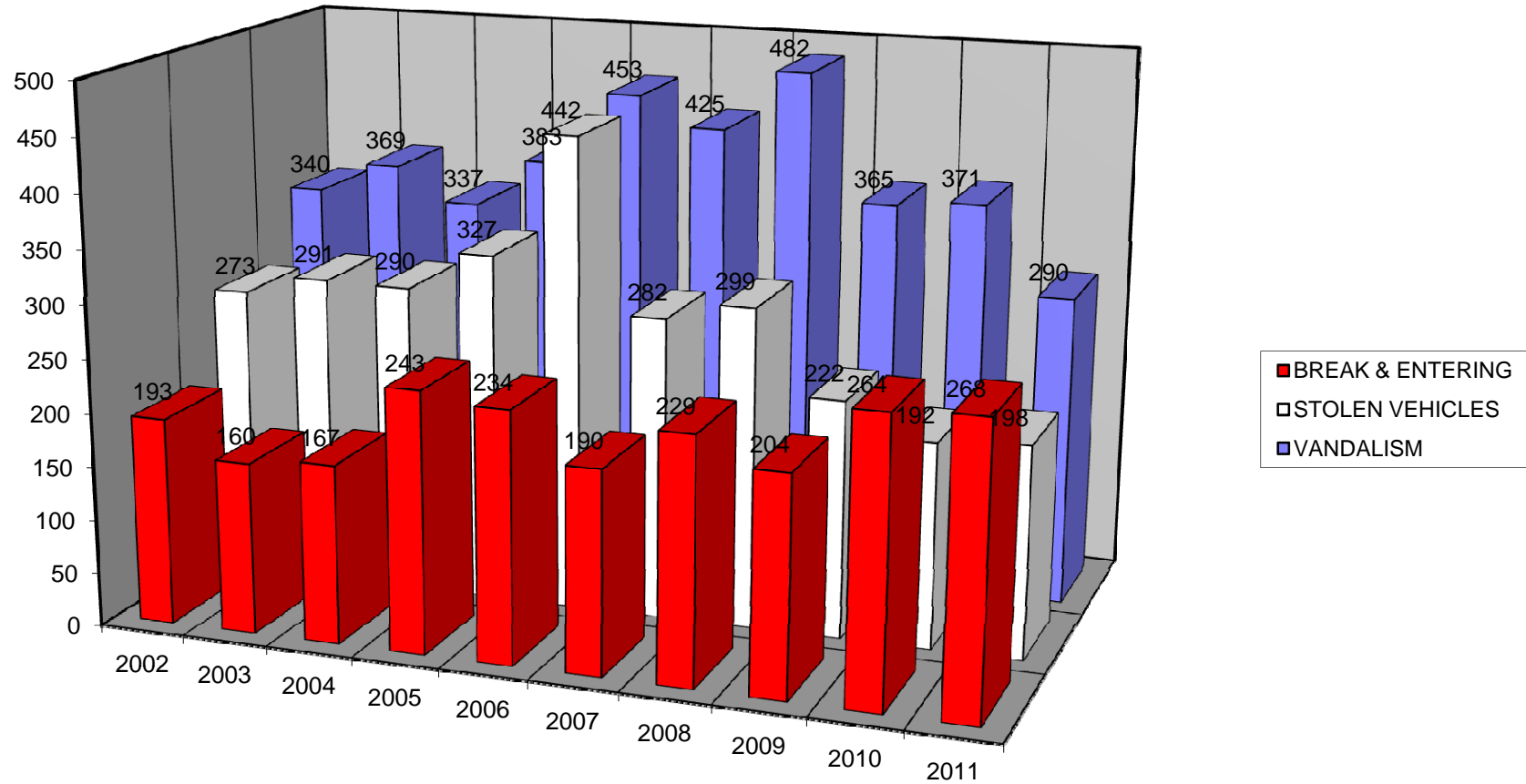
# Total Calls Dispatched



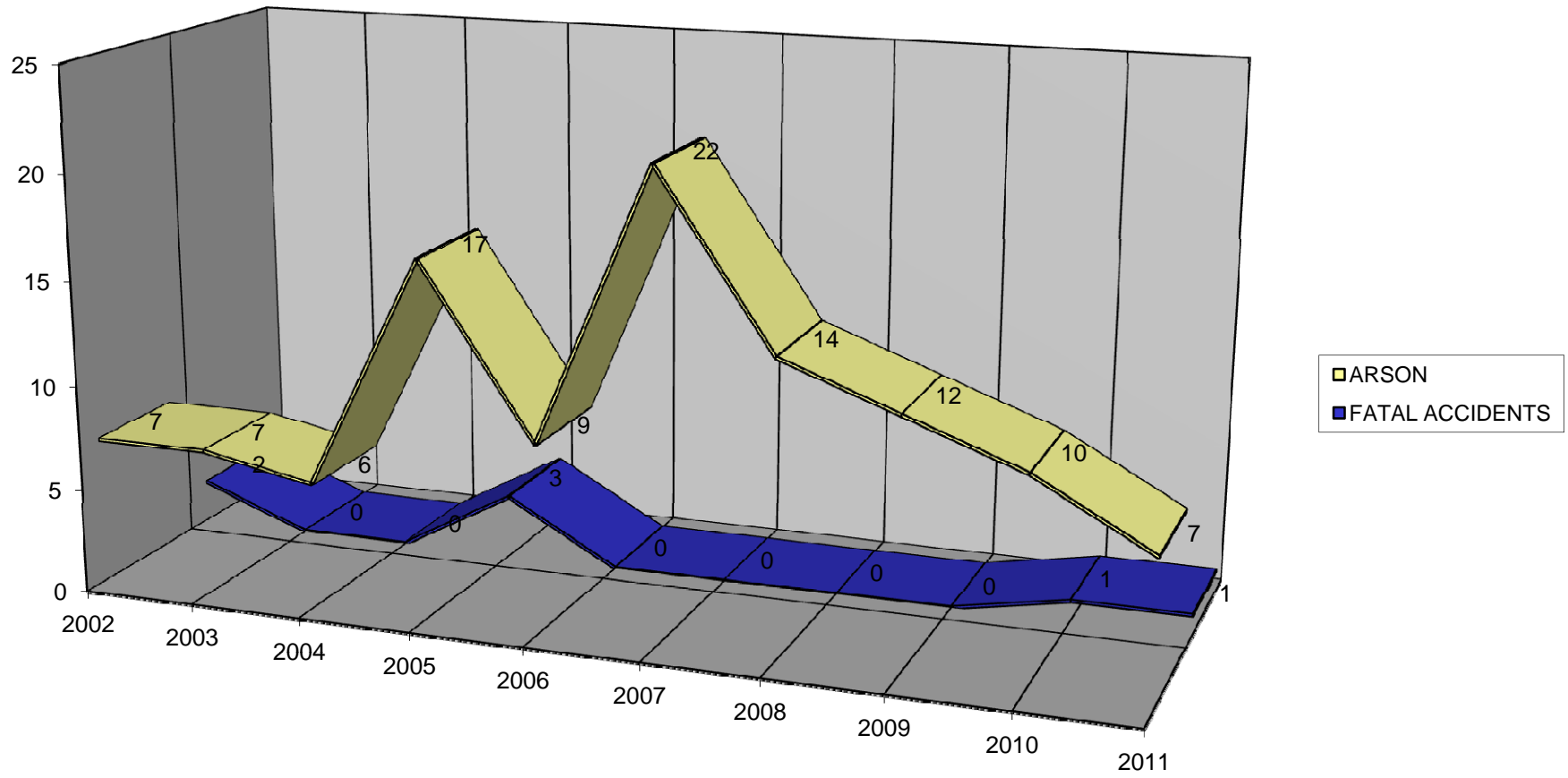
## Murder, Criminal Sexual Conduct, and Robbery



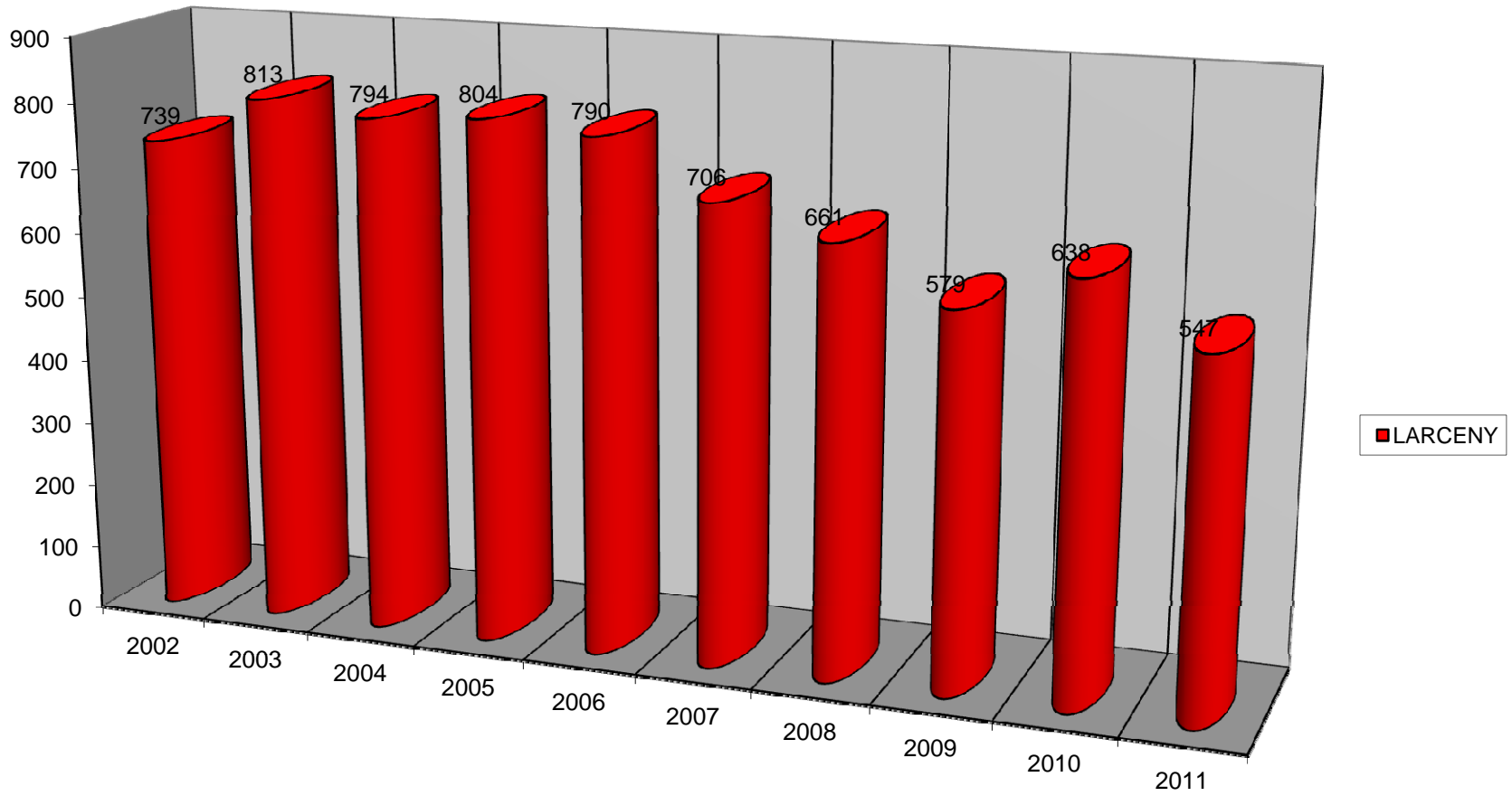
## Breaking and Entering, Stolen Vehicles, and Vandalism



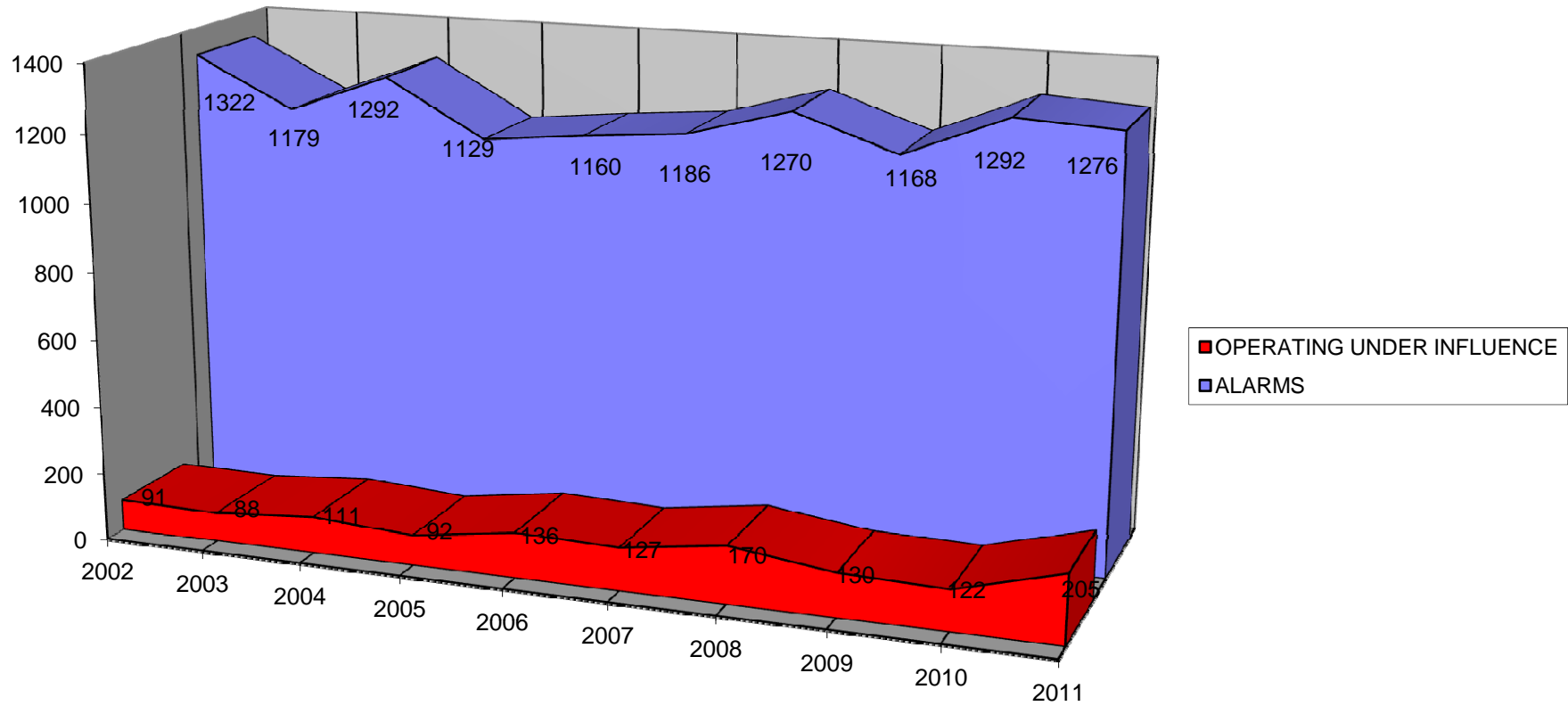
## Arson and Fatal Accidents



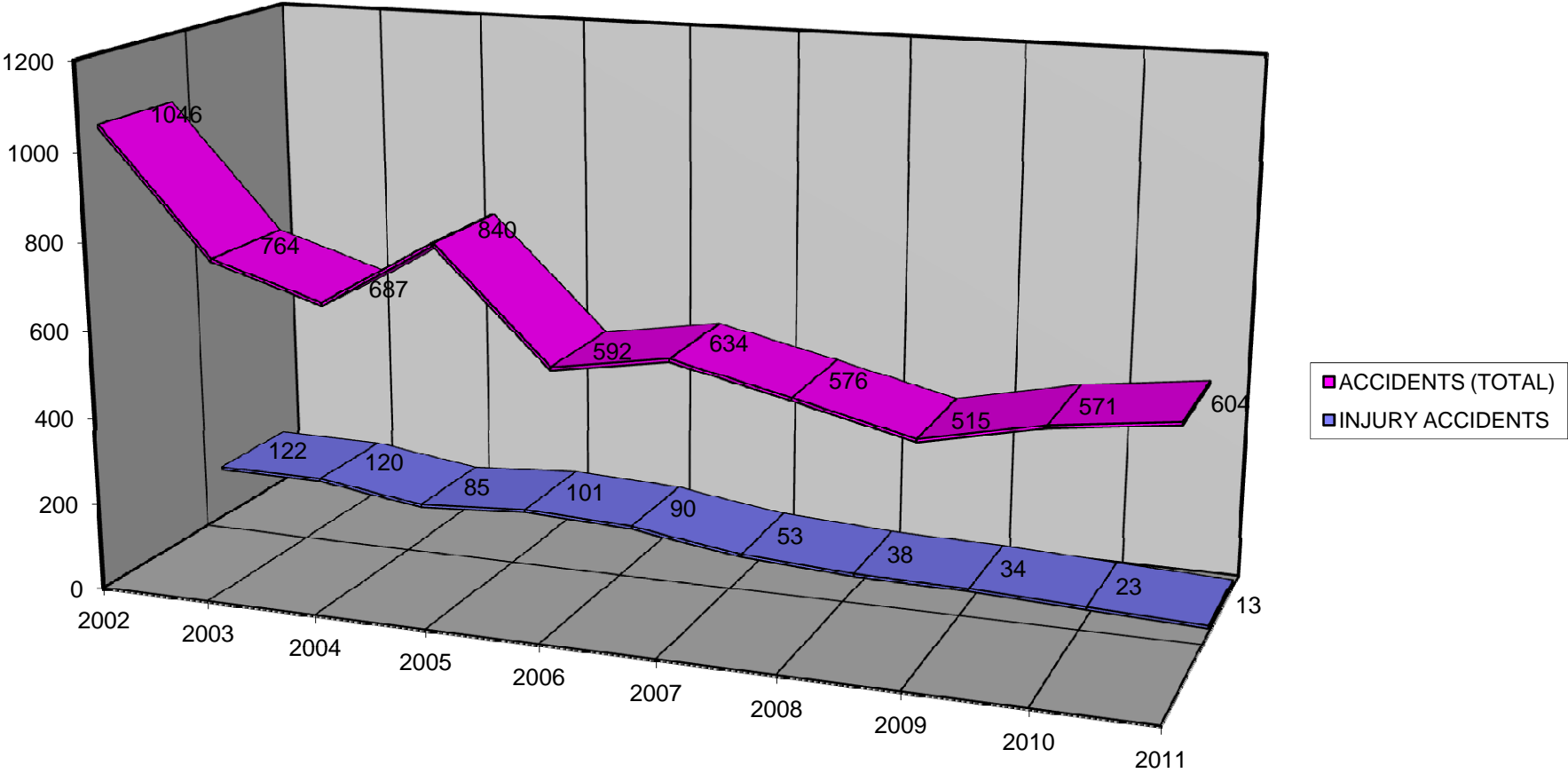
# Larceny



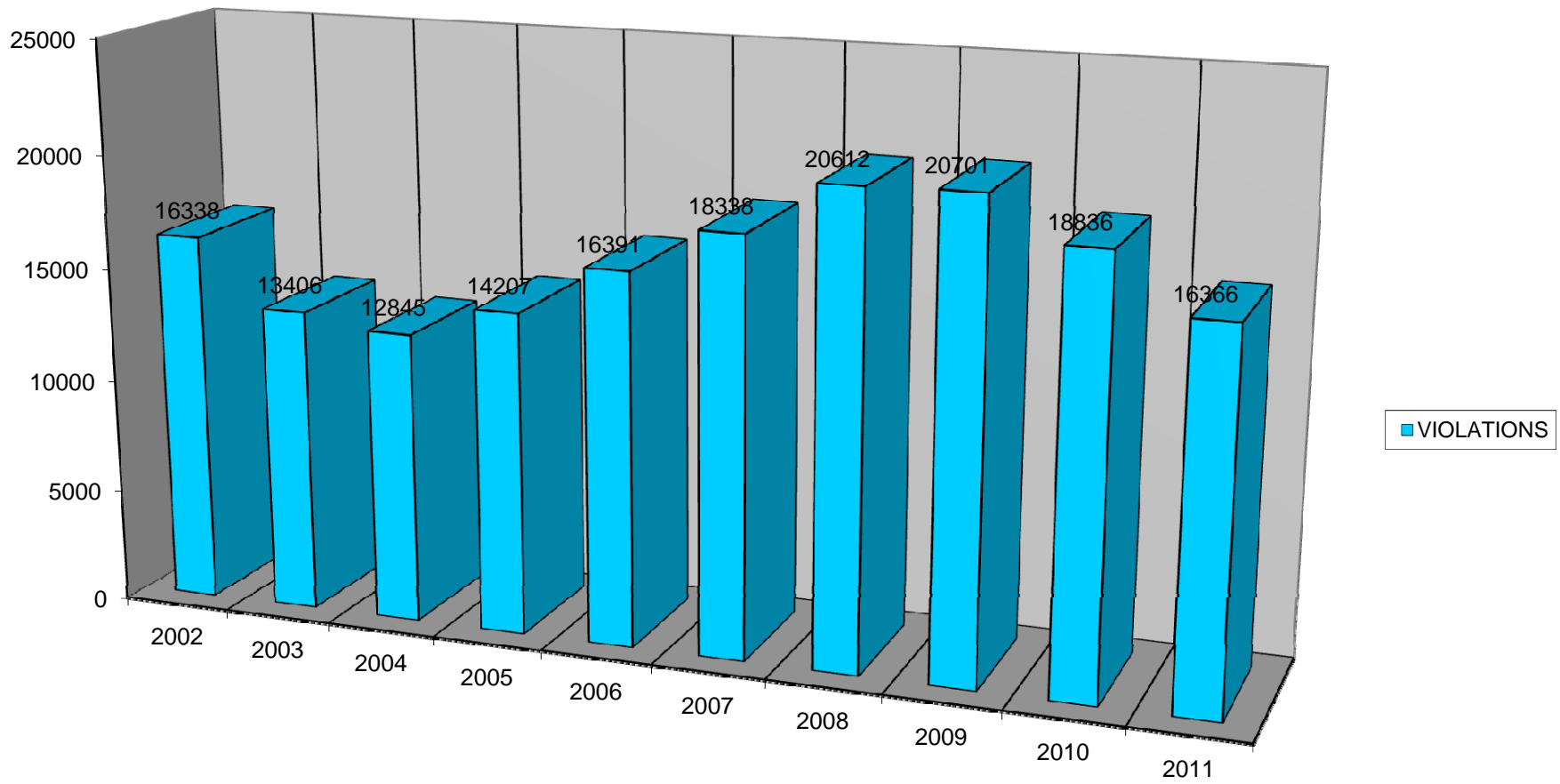
## Operating Under the Influence and Alarms



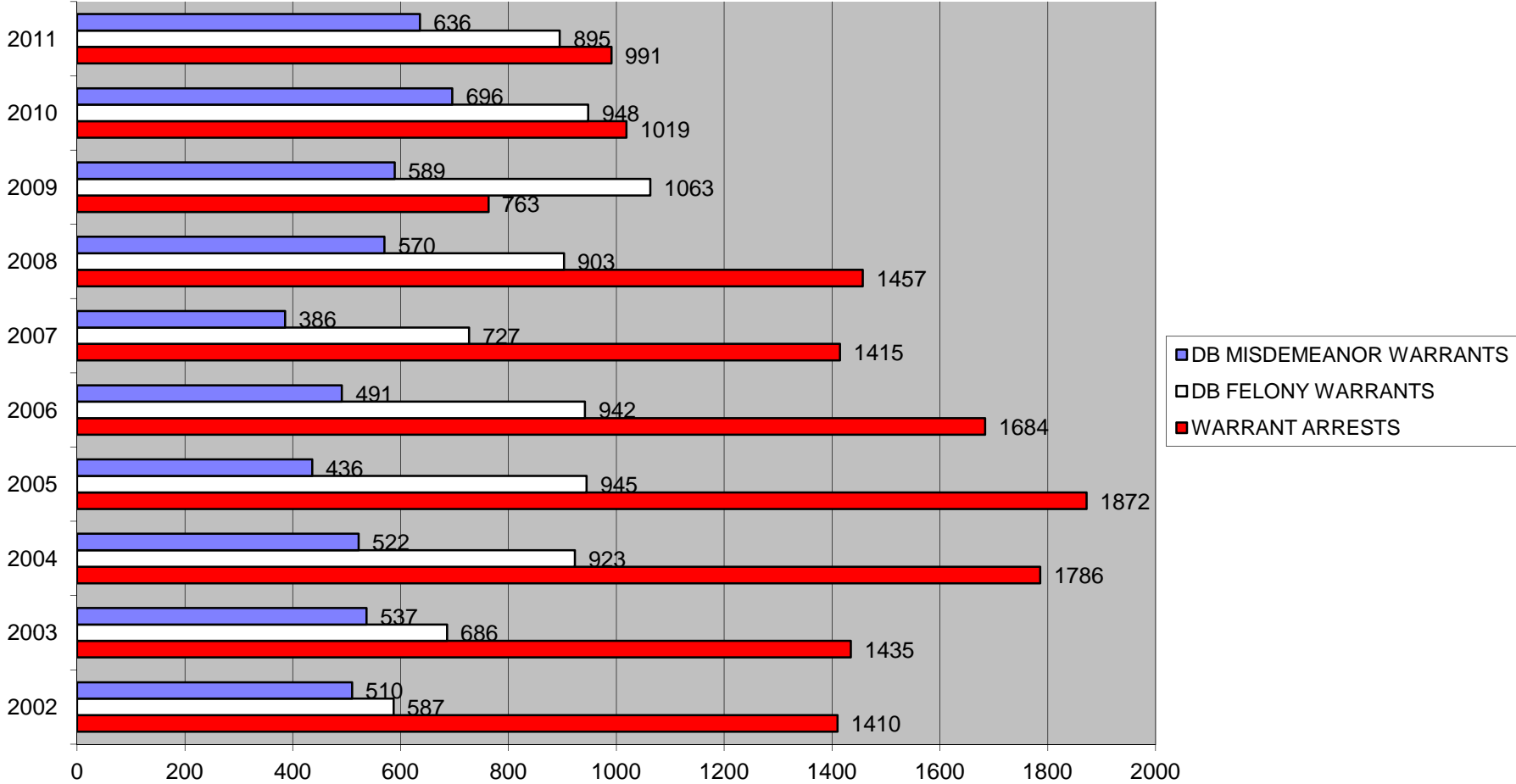
**Total Accidents and Injury Accidents**



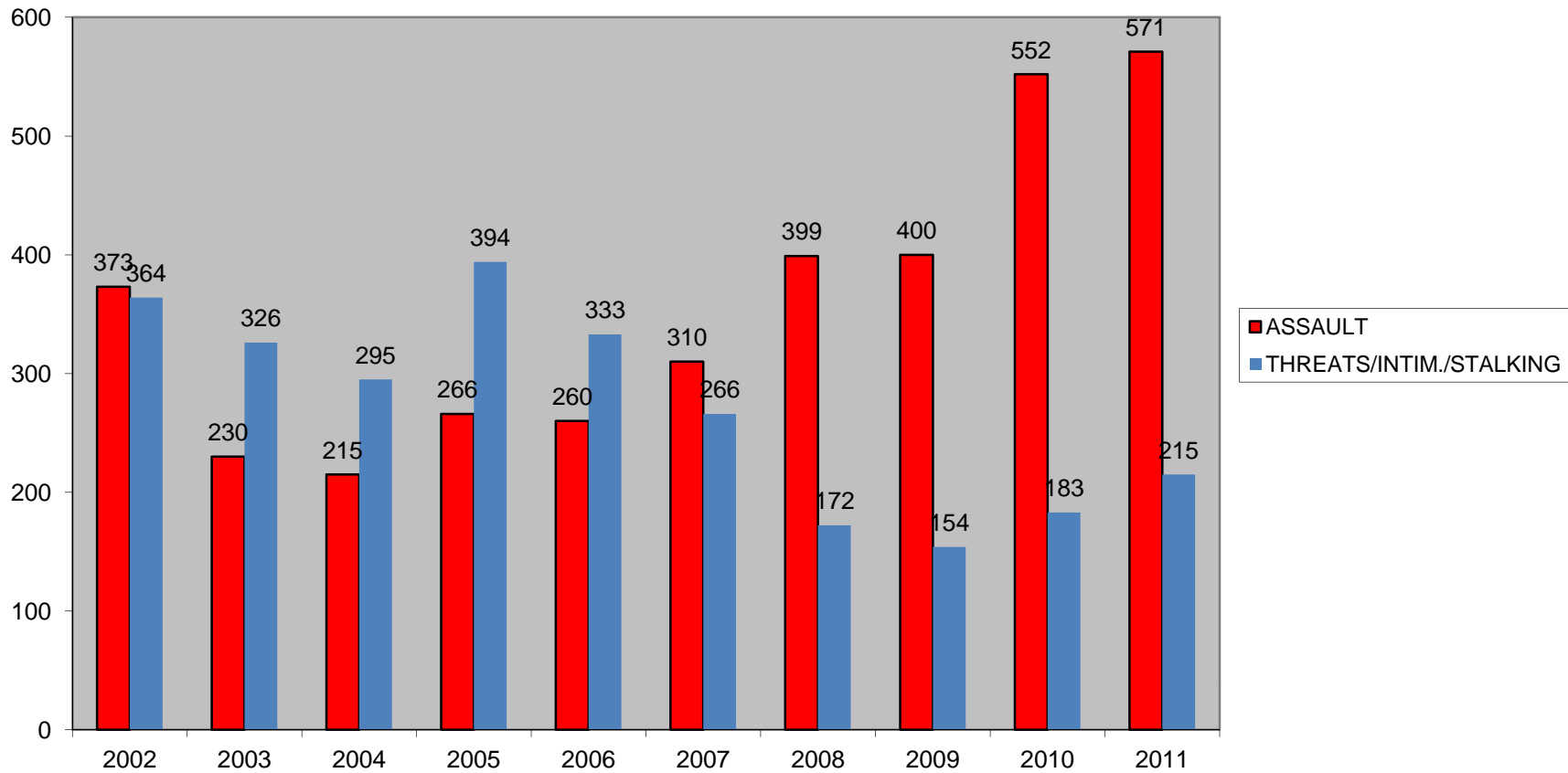
## Total Violations Issued



**Warrant Arrests, DB Felony and Misdemeanor Warrants Obtained**



## Assault, Threats/Intimidation/Stalking



## Total Arrests (Adult and Juvenile)

